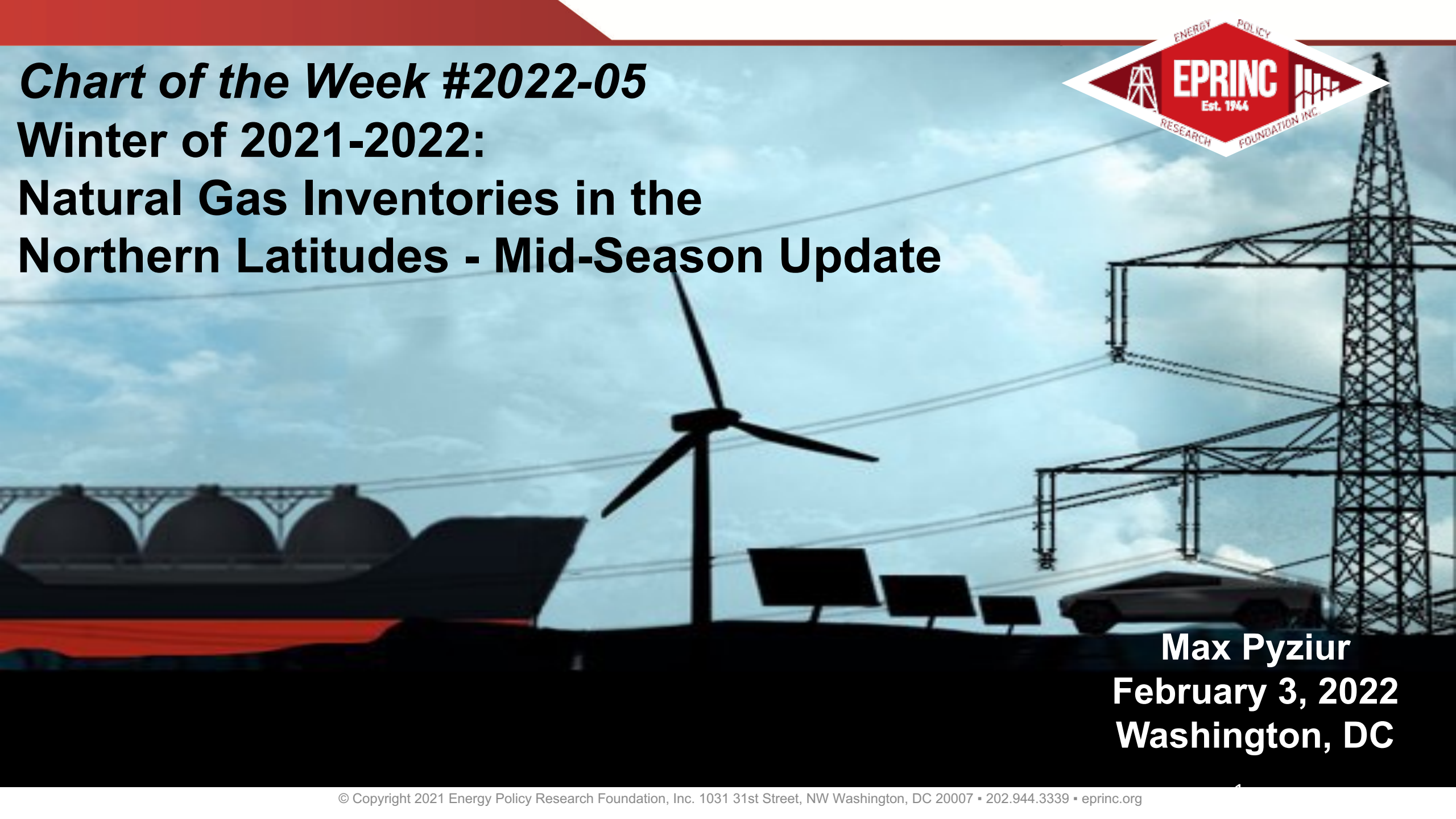




# ***Chart of the Week #2022-05***

## **Winter of 2021-2022: Natural Gas Inventories in the Northern Latitudes - Mid-Season Update**

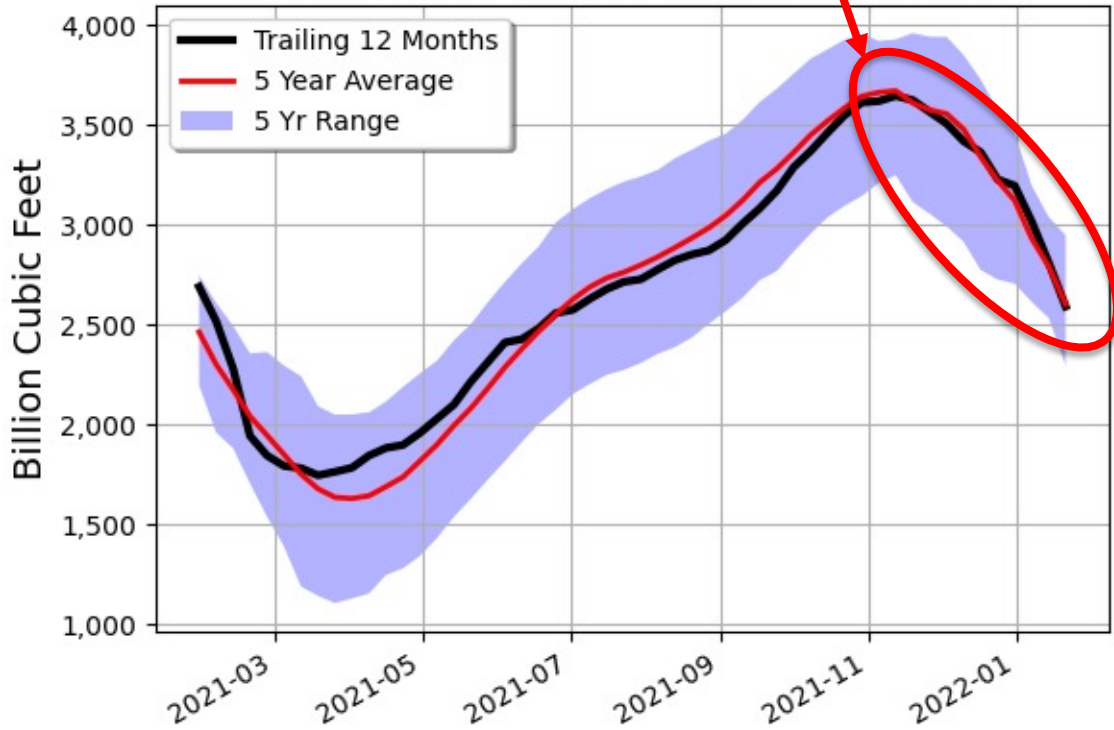


**Max Pyziur**  
**February 3, 2022**  
**Washington, DC**

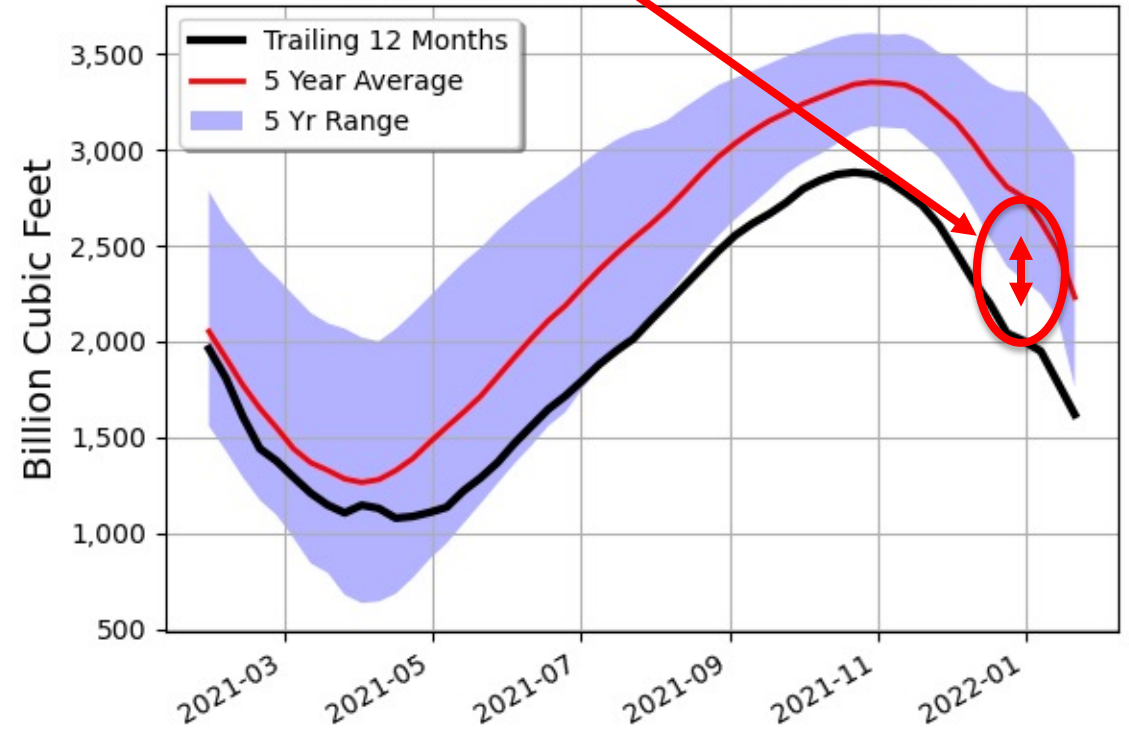
**U.S. natural gas inventory inventories continue to be at 5-year trend, while those of Europe are at critical levels for the season**



United States: Weekly Natural Gas Inventories trailing twelve months through 01/22/2022



Europe: Weekly Natural Gas Inventories trailing twelve months through 01/22/2022



Analysis based on EIA Data

@EPRINC\_DC

Analysis based on Eurostat Data

@EPRINC\_DC

# Winter of 2021-2022: Natural Gas Inventories in the Northern Latitudes - Mid-Season Update

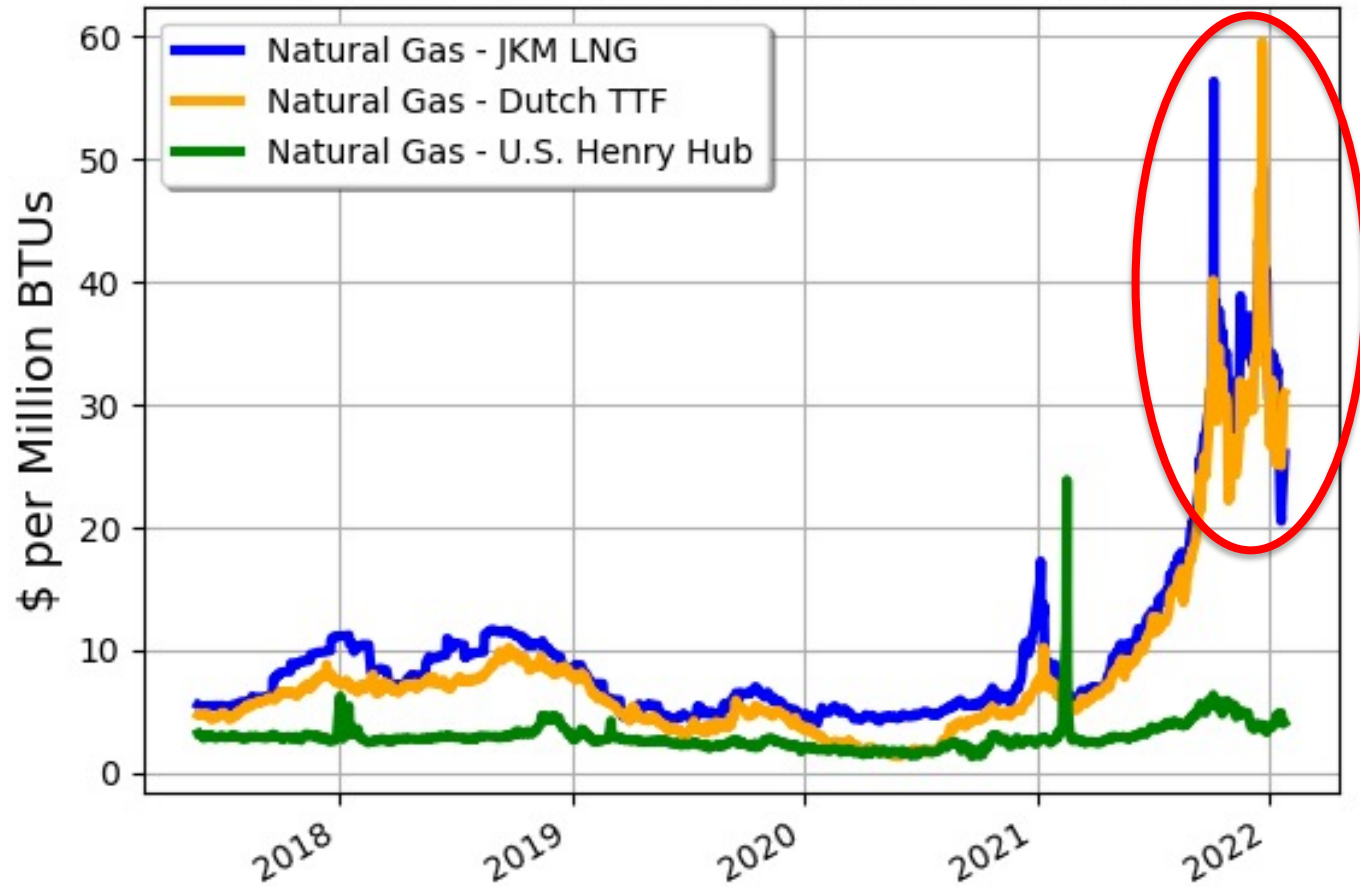


- Despite pandemic-weakened production and several cold Arctic weather episodes, U.S. natural gas inventories are staying at trend. Inventories have declined from 3.6 trillion cubic feet (TCF) to 2.5 TCF with no national shortages apparent. However depending on near-term weather demand, there might be some regions with poor access to natural gas distribution infrastructure, in particular the Northeast.
- In the aggregate, European natural gas inventories have declined strongly to 1.6 TCF from 2.8 TCF. There have been some curtailments reported in places such as Kosovo.
- In response to European shortages, close to fifty U.S. LNG cargos (about 100 billion cubic feet) have been diverted to Europe. In January, U.S. LNG made up 46% of European LNG imports compared to those from Qatar, Nigeria, and Algeria at 10%, 9%, and 8%, respectively.
- On February 2nd, 2022, EPRINC cohosted a webinar titled "Power Disruptions in Texas and California: Energy Price Shocks in Europe." Speakers included former U.S. Secretary of Energy Dan Brouillette, former Chairman of the Federal Energy Regulatory Commission (FERC), Neil Chatterjee, as well as other U.S. and European industry leaders, and think-tank experts. The discussion covered growing pressures on energy markets in the U.S. and Europe and what lessons policy makers should take from these developments. More is available at this link: <https://eprinc.org/2022/02/ggc-eprinc-webinar-power-disruptions-in-texas-and-california-energy-price-shocks-in-europe/>.
- This slide deck is available at: <https://eprinc.org/chart-of-the-week/>
- For more information on this chart, please contact Max Pyziur ([maxp@eprinc.org](mailto:maxp@eprinc.org)).



# Additional Slides

## Natural Gas - JKM LNG, Natural Gas - Dutch TTF, Natural Gas - U.S. Henry Hub: 01/23/2017 to 02/01/2022



**East Asian (JKM) and European (TTF) natural gas spot prices are off peaks, they continue to still be high.**

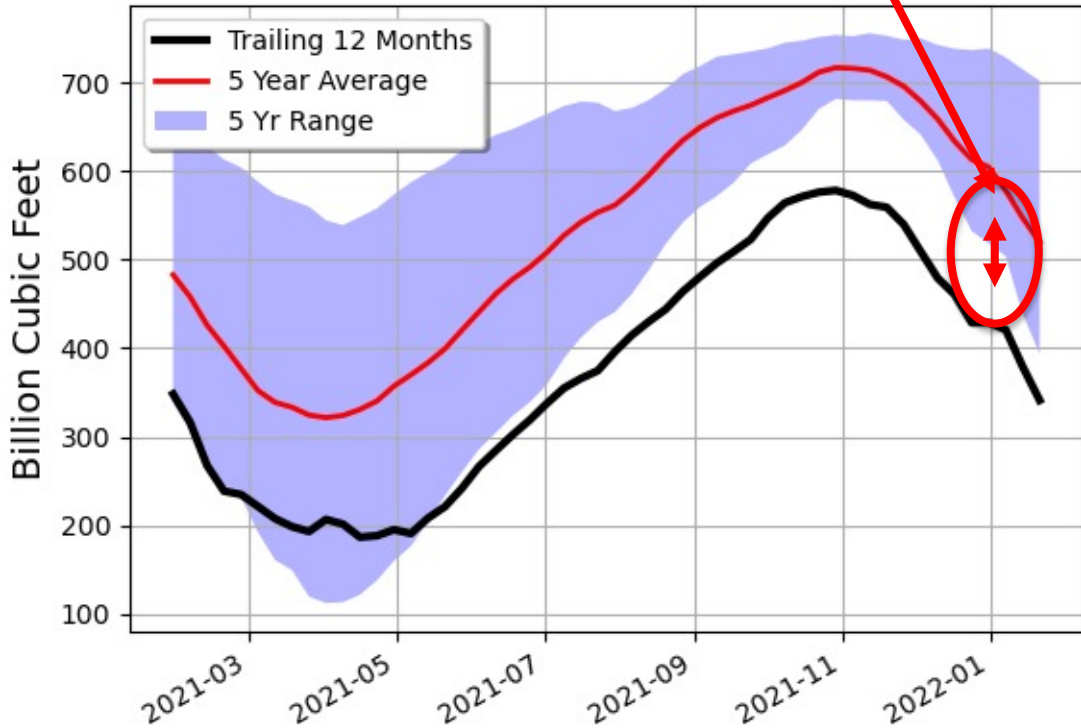
Analysis based on CME, EIA, and ICE Data

@EPRINC\_DC - Feb 01, 2022

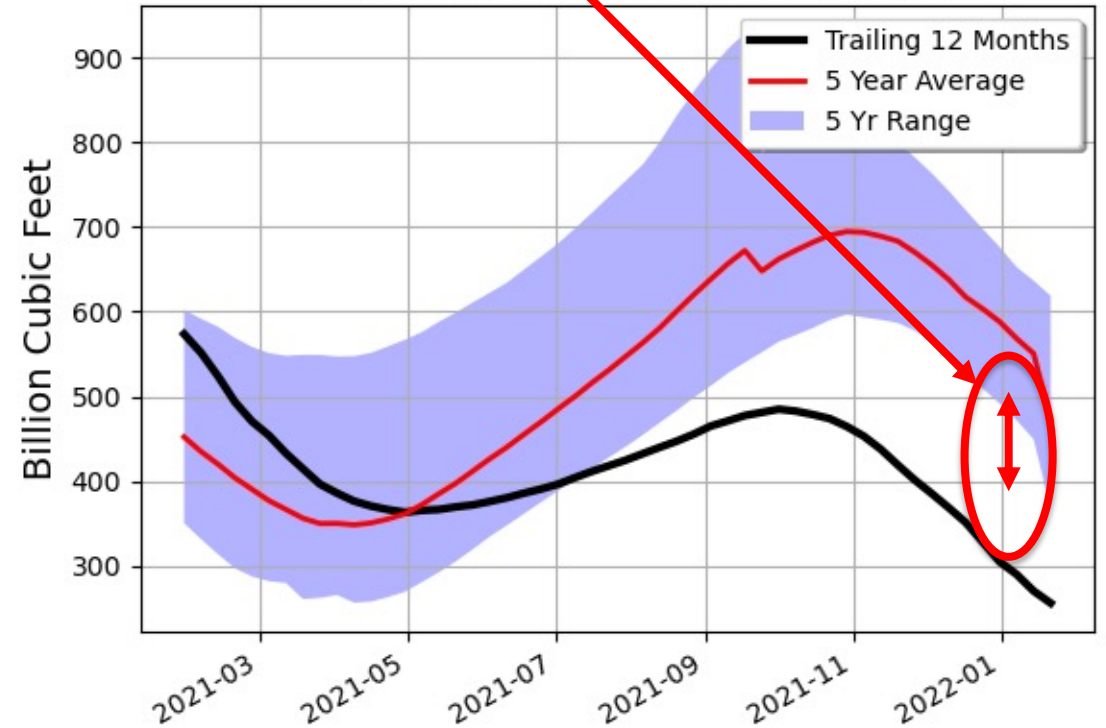
# Germany and Ukraine's natural gas inventories continue to be at critically low levels.



### Germany: Weekly Natural Gas Inventories trailing twelve months through 01/22/2022



### Ukraine: Weekly Natural Gas Inventories trailing twelve months through 01/22/2022



Analysis based on Eurostat, IEA, and JODI Data

@EPRINC\_DC Analysis based on Eurostat and JODI Data

@EPRINC\_DC