



Distillate Demand - U.S. and PAD I

**A Presentation by
John H. Lichtblau
Chairman**

at the National Oil Heat Conference

**Organized by
Petroleum Marketers Association Of America**

August 11, 1997
New York, New York

Petroleum Industry Research Foundation, Inc.

122 East 42nd Street • Suite 516 • New York, NY 10168
Tel.: (212) 867-0052 • Fax: (212) 682-4498



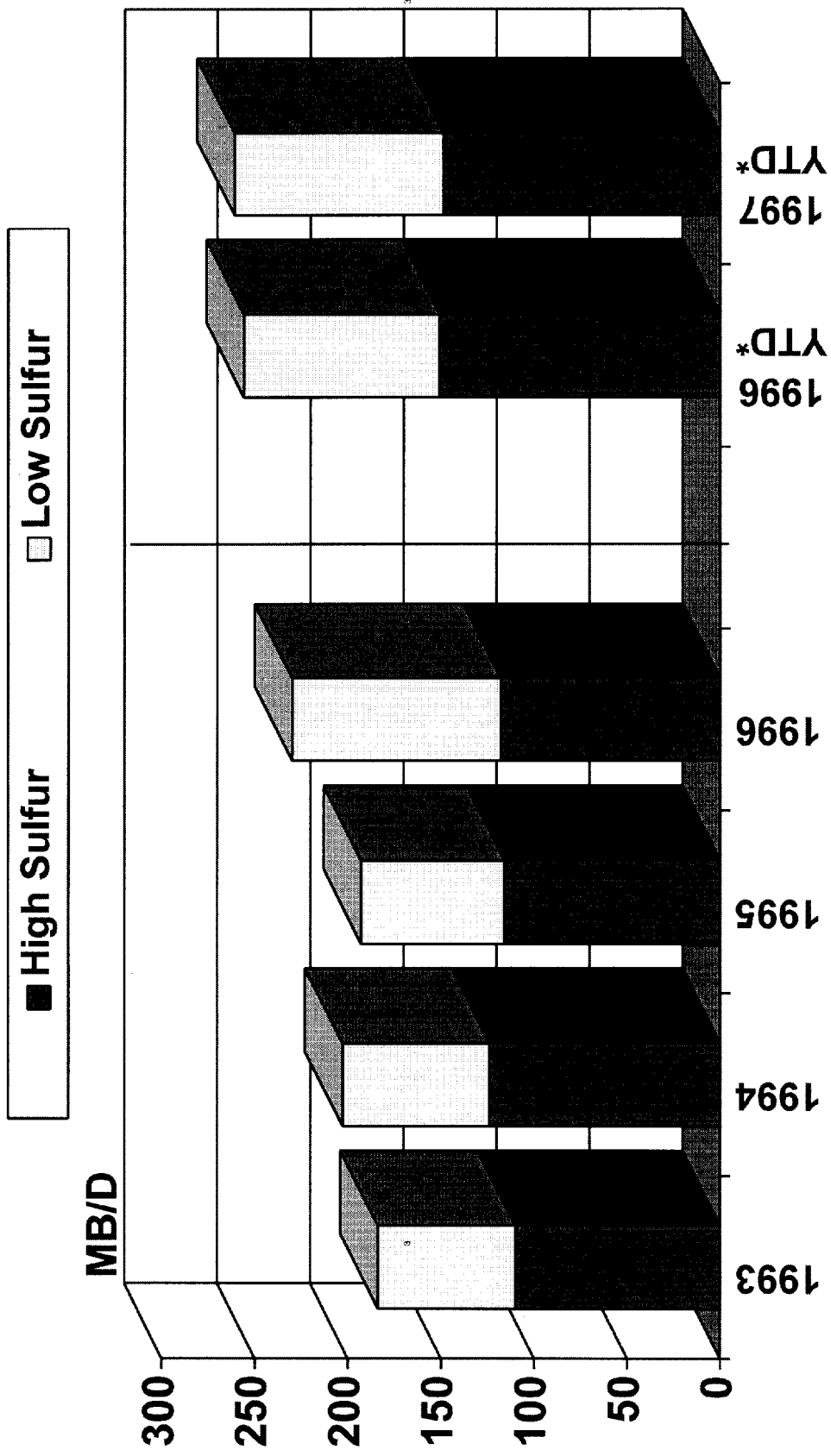
DISTILLATE DEMAND BY SECTOR

(Million B/D)

	<u>1995</u>	<u>1996</u>	<u>1997</u>
HEATING	0.63	0.64	0.60
TRANSPORTATION	2.02	2.14	2.23
OTHER	0.56	0.59	0.61
TOTAL	3.21	3.37	3.44



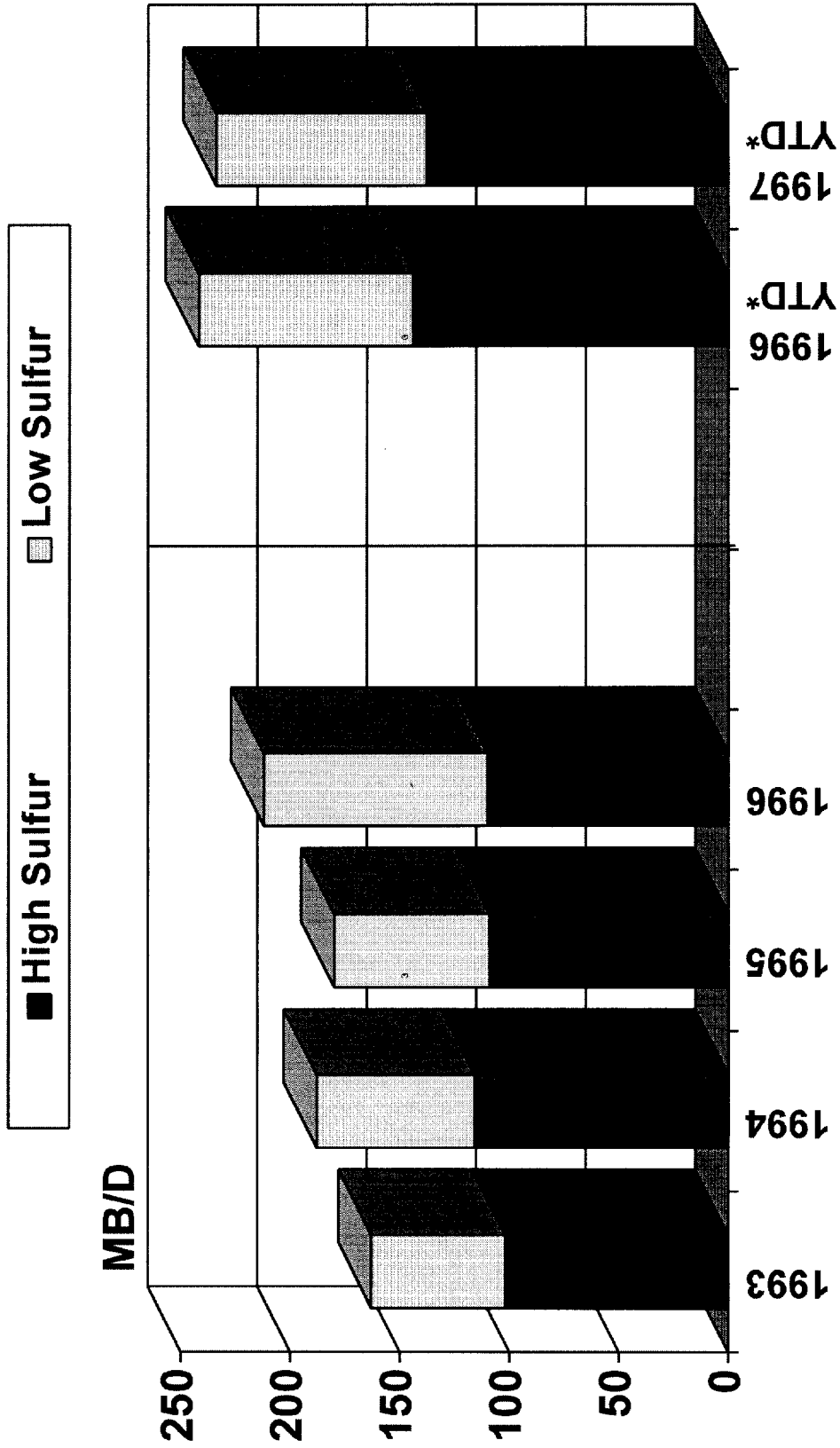
U.S. - HIGH SULFUR VS. LOW SULFUR DISTILLATE IMPORTS, 1993 - 1997



* January through April



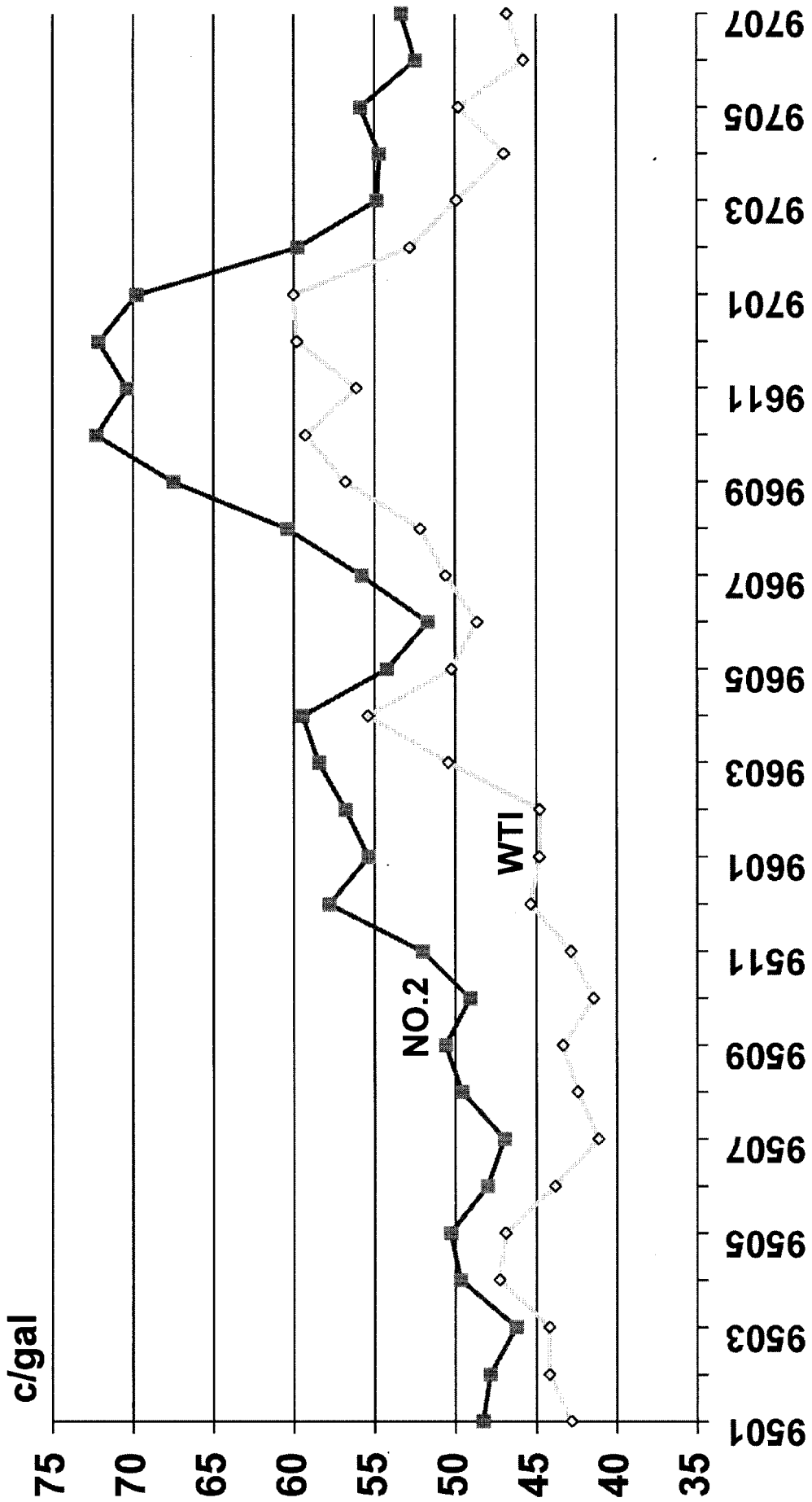
PAD 1 - HIGH SULFUR VS. LOW SULFUR DISTILLATE IMPORTS, 1993 - 1997



* January through April



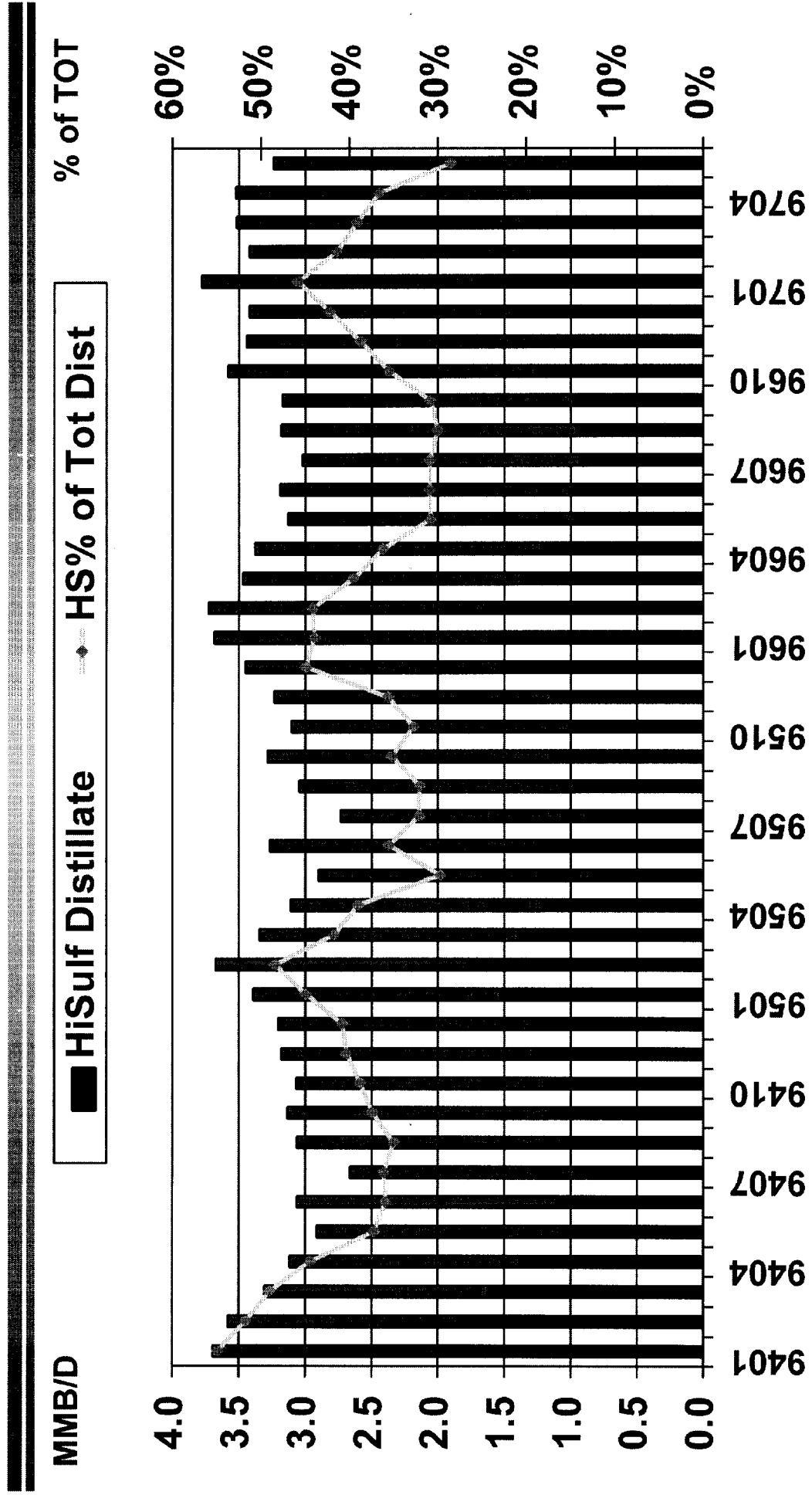
NYMEX 1st Mo WTI AND NO.2 PRICES, 1995 - 1997





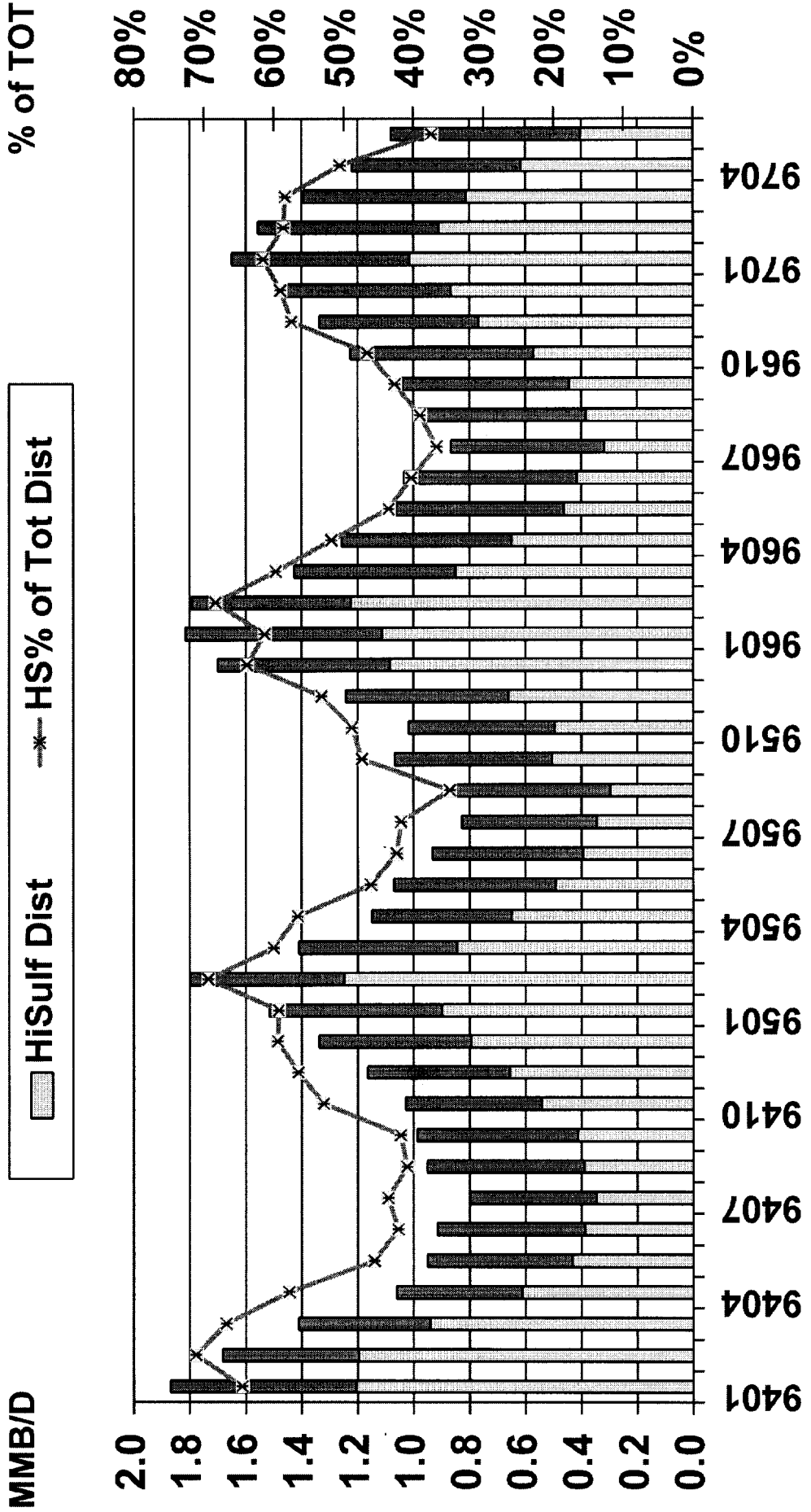
U.S. DISTILLATE DEMAND

1994 - 1997



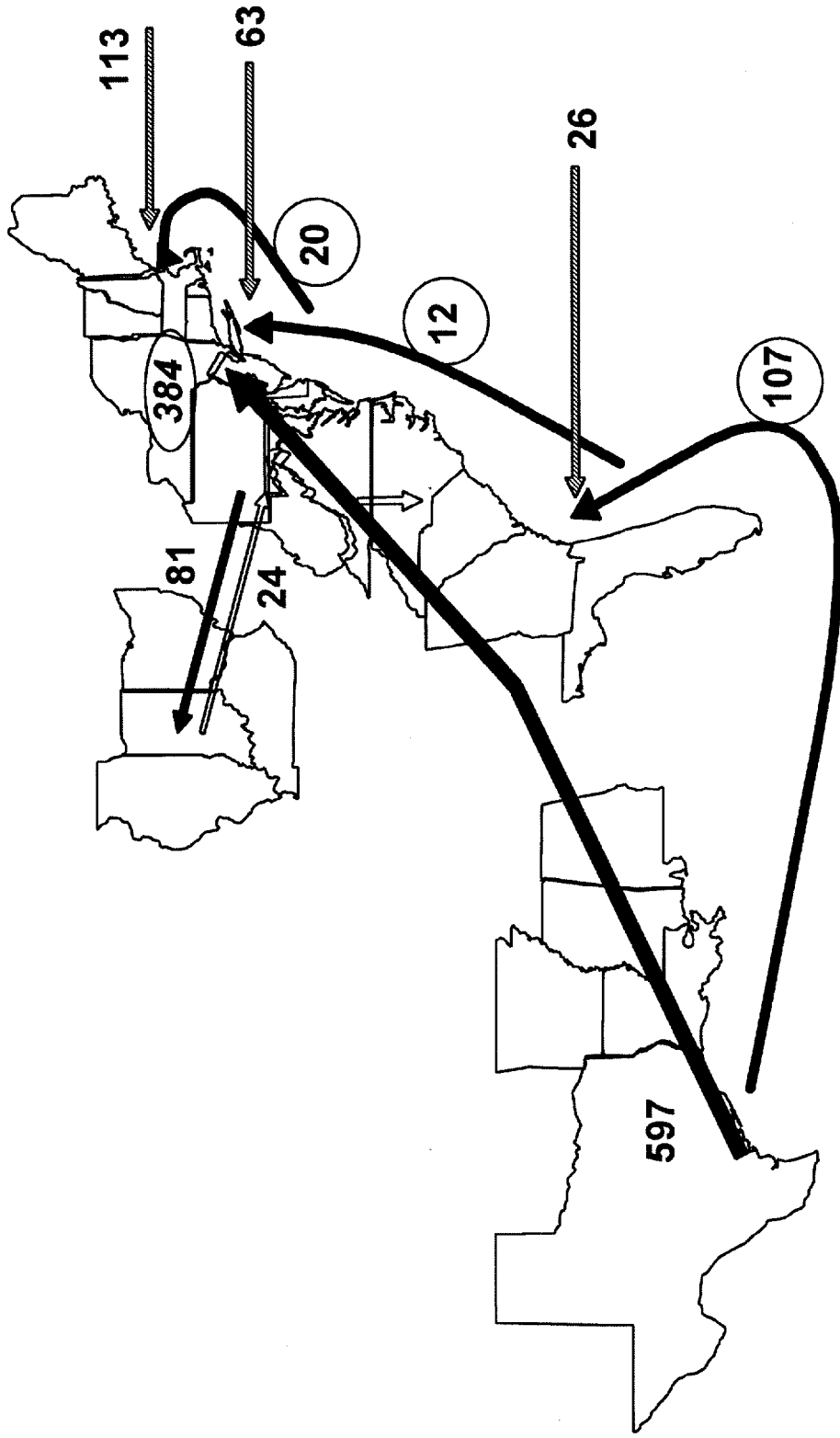


PAD 1 DISTILLATE DEMAND 1994 - 1997

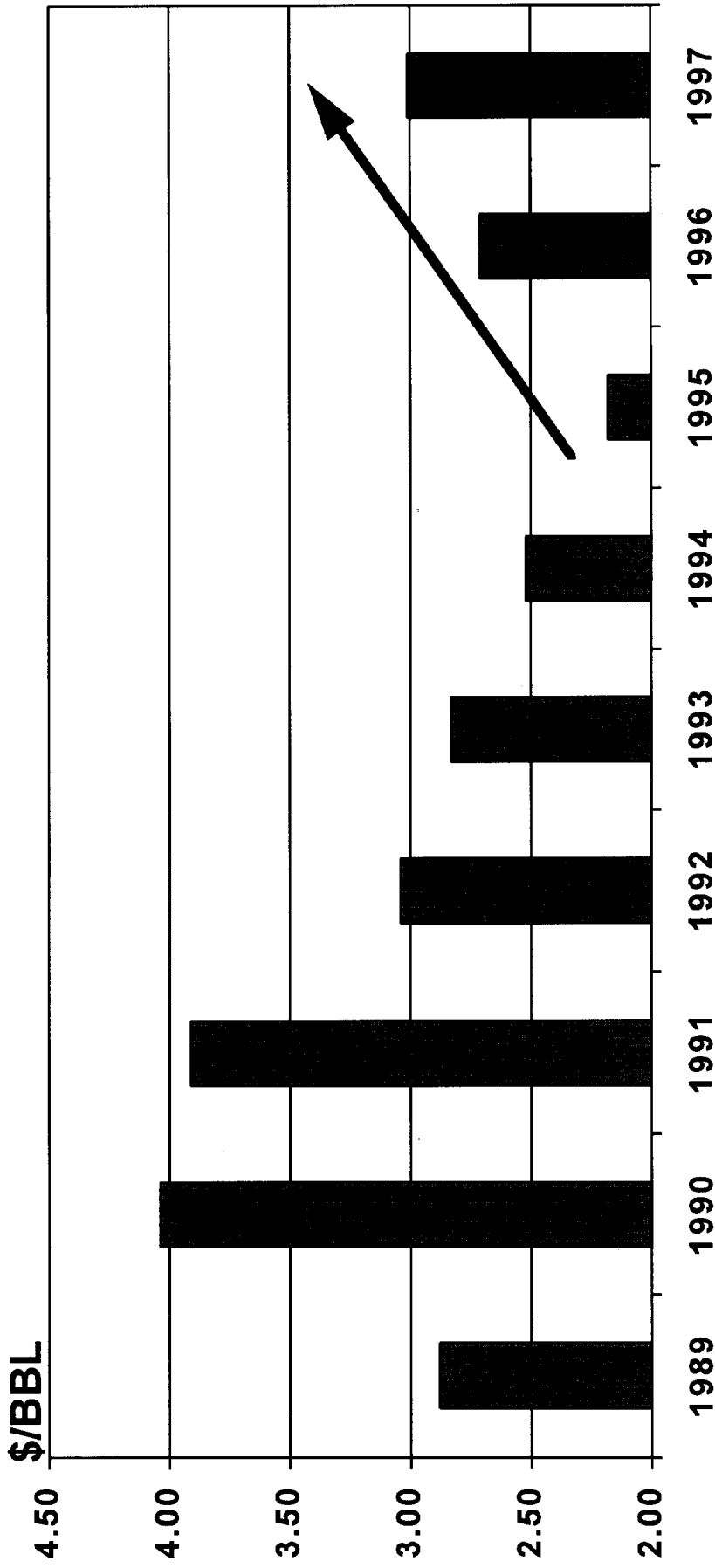




PADD I DISTILLATE BALANCE, 1996 (MB/D)



U.S. REFINERY MARGINS, 1989 - 1997



2:1:1 CRACK, USGC